

# Formica Ligna®

NATURAL WOOD SURFACING *by* FORMICA GROUP



## | L8400LC Savona Rigato

Endowed with calming patterns resembling the surface formed by water ripples, our Long Carved is etched with deeply random scaled texture into solid lumber in the most authentic way.

Exquisitely hand carved with traditional hand-held tools, it exudes feelings of warmth and wonders with its states of naturalness and calm which cannot be replicated by machine.



## | More than real.

Formica Ligna® combines the warmth of real wood with engineering innovations that provide greater ease of fabrication, more consistent quality and a higher level of usability than conventional wood veneers. We've also enhanced aesthetics from classics and basic straight grains to tropical Exotics. Our veneers look and feel more than real. Derived from sustainable forestry practices, poplar, obeche, basswood and bamboo are used to produce Formica Ligna®.



## | SURFACING

### 01 Short Carved finish

Short Carved finish is the scaled variation of the artisanal technique of carving into solid lumber with traditional hand-held tools. The randomness and human imperfection make it clear that these finishes are not produced by machine.

### 02 UV finish

UV finish is a lustrous gloss that accentuates and strengthens grain feature.

### 03 Long Carved finish

Similar to Short Carved, Long Carved finish shapes a more refined variation of the artisanal technique of carving into solid lumber with traditional hand-held tools. This handcrafted surface evokes a more natural, calming feeling that cannot be accomplished with machine-made techniques.

### 04 Matte finish

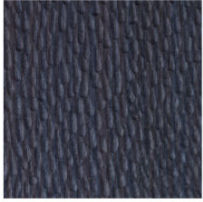
Matte finish is a simple low gloss finish that allows the natural grain of the timber to shine through.

### 05 Roughcut finish

Roughcut finish is a medium gloss planked finish. It emulates the effect of saw blade cross chatter that happens on the first rough cut of lumber processing. The effect is slightly rustic.

### 06 Chiselled finish

Exclusive to Formica®, Chiselled finish hints at wood craft technique, with long strips punctuated by angled ends. Although the texture runs down the length of the sheet, it is designed to work best with reflected light when the sheet is applied in the horizontal direction.



## Rigato

### Refreshing Realism

It's all about the pairing raw, natural colours with thin irregular vertical stripes.

Rigato presents an integration of colour blending with contrasting grain details, all with natural realism.

**L8412SC**  
Como Rigato



**L8398MA**  
Messina Rigato



**L8398RC**  
Messina Rigato



**L8398SC**  
Messina Rigato



**L8400CH**  
Savona Rigato



**L8400LC**  
Savona Rigato



**L8400MA**  
Savona Rigato



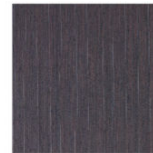
**L8400SC**  
Savona Rigato



**L8401CH**  
Sublime Ash



**L8401MA**  
Sublime Ash



**L8403CH**  
Aveela Rigato



**L8403MA**  
Aveela Rigato



**L8403RC**  
Aveela Rigato



**L8412MA**  
Como Rigato

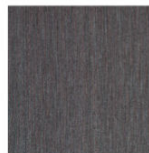


## Fino

### Exquisite Minimalism

Exquisitely defined by its gentle straight grains, Fino exudes a minimalist style in its appearance and design intention. Its uncomplicated graining makes it a practical choice to create a wide variety of applications.

**L8395MA**  
Buff Fino



**L8396MA**  
Grigio Fino



## Authentic beauty Superior performance.

Formica Ligna® brings the warmth and beauty of real wood to your interior surroundings.

## EXPLODING THE LIMITS OF CONVENTIONAL VENEER

- Formica Ligna® defect-free wood minimizes labor and waste in fabrication and finishing.
- Phenolic backer makes wood easy to handle, cut and glue, eliminating waste from breakage.
- Fabricated with conventional laminate tools and adhesives, and sized to fit standard MDF and particleboard substrates.
- Eliminates much of the cutting, seaming and matching of conventional veneers, along with all of the staining, varnishing and harmful emissions from finishing products.
- Pre-finished veneers allow for consistency on large projects or national roll-outs.



## Crown

Distinctive Personality

Encapsulating an unmistakable sense of uniqueness and personality, the Crown series offers a rich visual to the curious roving eyes. Find and create beauty in the extraordinary.

**L8402MA**  
Halcyon



**L8404MA**  
Biscotti Crown



**L8404RC**  
Biscotti Crown



**L8405MA**  
Siena Crown



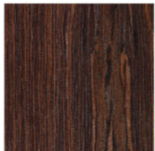
**L8406RC**  
Weathered Walnut



**L8406MA**  
Weathered Walnut



**L8407LC**  
Milano Crown



**L8407MA**  
Milano Crown

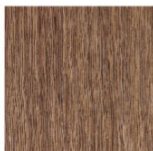


## Exotic

Truly Intriguing

Fully engrained with a rich degree of exoticness and contrasting details, this series is truly an intriguing head-turner which can instantly create elements of excitement to any spaces you have in mind.

**L8410LC**  
Siam



**L8409MA**  
Wild Pecan



**L8409SC**  
Wild Pecan



**L8410MA**  
Siam



**L8414UV**  
Ebano Medio



## Design flexibility

Creative freedom.

Formica Ligna® woods are as diverse as those found in nature, but better-custom capabilities permit unique patterns and combinations unattainable in conventional veneers.

Complementing well with the other Formica® brand surfaces, Formica Ligna® generates possibilities for unique design solutions.



## | Color Consistency

Formica Ligna® is produced from genuine wood veneer. As with natural timber veneers, there will be inherent variations in the physical properties of this crucial raw material, reflecting its environmental history.

## Formica Ligna® | THE MAKING OF SUPERIOR WOOD



1 Veneers are rotary-peeled from logs, providing maximum yield.



2 Veneers are sliced into sheets.



3 Veneers are vat dried in water-based solution.



4 Vat-dyed sheets of veneer are collated with transparent glue between each sheet.



5 Collated, glued sheets are inserted into a press outfitted with CAD-designed molds and are pressed under enormous heat and pressure, fusing them into new logs.



6 New logs are cut to produce new sheets of veneer.



7 Veneers are bonded to phenolic kraft to ensure ease of handling and fabrication.



8 Unfinished veneers are lightly sanded for custom finishing.



9 Veneers receive surface stain plus three coats of oven-cured polyurethane.

## RECOMMENDED APPLICATION

Formica Ligna® is intended for dry vertical or light-duty horizontal application only. **Not suitable for countertops or high-wear horizontal surfaces subject to abrasive objects.**

Formica Ligna® wood surfacing is real wood veneer bonded to a phenolic back which provides ease of handling and less dimensional movement than conventional veneers. Formica Ligna® combines the beauty of natural wood with exotic designs and more consistent quality and ease of use than conventional wood veneers, while demonstrating sensitivity to the environment. **Formica Ligna® is made from real wood veneer; consequently, slight color and pattern variation may occur and does not indicate a product defect. As with natural wood, exposure to direct sunlight can produce color change and should be avoided. Any slight change in color over time does not indicate a product defect.**

## SIZES

Sheets are available in nominal 4' x 8' (1220mm x 2440mm) or 4' X 10' (1220mm x 3050mm) sizes.

## COLORS AND PATTERNS

Formica Ligna® is available in a broad selection of natural woodgrains. Samples are available from your Formica distributor or Sales Representative.

## FABRICATION : LIMITATION

Formica Ligna® is not recommended for application directly to plaster, gypsum board (drywall) or concrete. If applying to metal, do not exceed 18" width. Formica Ligna® should not be used in areas exposed to excessive water, temperatures exceeding 275 °F (135 °C) for prolonged periods of time or for exterior applications. While Formica Ligna® wood surfacing provides greater consistency of color and pattern than conventional veneers, as in nature, no two pieces of real wood are perfectly matched. Slight woodgrain variations in color are not to be viewed as product defects.

## SUBSTRATES

The recommended cores for Formica Ligna® are 45# density,

Industry-grade particleboard (CS 236-66: Type 1, Grade B, Class 2) or medium-density fiberboard (MDF). The substrates should be sanded smooth, clean, free of oil or grease and uniform in thickness. Do not use plaster, gypsum board (drywall), concrete, solid lumber or underlayment.

## ADHESIVES

The strength of the bond between Formica Ligna® and the substrate determines the amount of stress that may be transmitted to the substrate. Contact adhesives are the weakest of all recommended adhesives because of their elastomeric nature. PVAC (white glue), urea and resorcinol adhesives distribute much more of the stress to the substrate, making these assemblies more crack-resistant.

Complete coverage of the substrate and the backer with the adhesive is imperative, since the material will not bridge adhesive gaps as Formica® brand laminate does.

## STORAGE

Formica Ligna® sheets should be stored horizontally, back-to-back, face-to-face, with the top sheet turned face down and a caul board placed on top to protect the material from possible damage and reduce the chance of warpage of the top sheets. The material should be protected from light, heat and moisture and should never be stored in contact with the floor or an outside wall. Optimum conditions for storage are approximately 75 °F (24 °C) and 40 to 65% relative humidity.

## RECONDITIONING

As with all wood-based products, Formica Ligna® nature wood surfacing reacts to the ambient conditions. Formica Ligna® and substrates gain moisture and expand under high relative humidity conditions and lose moisture and shrink under dry relative humidity conditions. **Allow the Formica Ligna® sheet and the substrate to acclimate for at least 48 hours at the same ambient conditions.** Optimum conditions are approximately 75 °F (24 °C) and at a relative humidity of 40 to 65%. Provisions should be made for the circulation of air around the components. Formica Ligna® moves about twice as much across the grain (sanding direction) as it does in the length direction. Whenever possible, minimize the dimension of the cross-grain direction. Note: Stress cracking can result when high-moisture material is glued and subsequently exposed to low humidity conditions. However, overly dry material may expand and cause bubbling if improperly glued.

## ASSEMBLY

Material, equipment and workmanship should conform to the industry standard practices, conditions, procedures and recommendations as specified by NEMA LD3-1995, Section 4, Architectural Woodwork Quality Standards, DLPA (Decorative Laminate Products Association), and ANSI 161.2-1979 standards. Panel assemblies should be laminated with a suitable balancing sheet to minimize warpage. Always align sanding marks in the same direction

Formica Ligna®, Formica and the Formica logo are registered trademarks of Formica Corporation or its subsidiaries.



## COLOR AVAILABILITY GUIDE

Collection	Color Code	Item Description	Size (mm)	Structure	Thickness (mm)	Matte (MA)	UV	Roughout (RC)	Short Carved (SC)	Long Carved (LC)	Chiselled (CH)
Fino	L8395	Buff Fino	1220 x 2440	Straight	1.0	*					
	L8396	Grigio Fino	1220 x 2440	Straight	1.0	*					
Rigato	L8398	Messina Rigato	1220 x 2440	Straight	1.0	*		*	*		
	L8400	Savona Rigato	1220 x 2440	Straight	1.0	*			*	*	*
	L8401	Sublime Ash	1220 x 2440	Straight	1.0	*					*
	L8403	Aveola Rigato	1220 x 2440	Straight	1.0	*		*			*
	L8412	Como Rigato	1220 x 2440	Straight	1.0	*			*		
Crown	L8402	Halcyon	1220 x 2440	Crown	1.0	*					
	L8404	Biscotti Crown	1220 x 2440	Crown	1.0	*		*			
	L8405	Siena Crown	1220 x 2440	Crown	1.0	*					
	L8406	Weathered Walnut	1220 x 2440	Crown	1.0	*		*			
	L8407	Milano Crown	1220 x 2440	Crown	1.0	*				*	
Exotic	L8409	Wild Pecan	1220 x 2440	Straight	1.0	*			*		
	L8410	Siam	1220 x 2440	Straight	1.0	*				*	
	L8414	Ebano Medio	1220 x 2440	Crown	1.0	*	*				

## EDGE BAND

- Veneer edgeband are available for all items in Matte and UV finish. ■ 24mm x 50m and 44mm x 50m long rolls
- 0.5mm thickness. ■ Applied with standard hot-melt edgebanding equipment, PVA or contact cement.

## Formica Ligna® Performance

	IMO Certification	Full EN 438 compliance other than Scratch, stain & Wear	SBI Fire test	FSC	Postforming 50mm Radius
Formica Ligna*	V	V	V	V	V

# Formica Ligna®

NATURAL WOOD SURFACING *by* FORMICA GROUP

## About Formica®

Formica® is an iconic brand, which is intrinsically linked with the material, High Pressure Laminate (HPL). We have developed an unrivalled expertise that ensures products are fit for purpose and meet market demands. Working closely with architects, designers and specifiers, Formica® is ideally placed to office new products and decors which complement current design trends, and has an ongoing product design and development process.

Formica®: Designs for today with forever in mind.

## Sustainability Statement

Formica Group is committed to making sustainable principles and practices a part of everything we do. We strive to adhere to the highest ethical standards as we advance in our efforts to protect vital resources for future needs.

With sustainability a concern for the global community, Formica Group makes it a priority to offer architects, designers and consumers a full range of environmentally friendly surfacing products. Formica Group continually strives to create innovative products that promote a healthier environment. Find out more about how we are putting 'green' principles into practice.

## FSC™ Chain of Custody Certification

The Forest Stewardship Council (FSC) advocates on the environment responsible, socially acceptable and economically viable ways to manage the world's forests. FSC Chain of Custody certification is awarded to companies that can track and document FSC certified material through the production process, from the forest to the consumers, including all successive stages of procurement, processing, manufacturing, distribution and sale of certified goods. With the FSC COC certifications, it will mean that the product is manufactured from 'responsible sources'.

In 2012, Formica Asia (covering China, Taiwan and Thailand) has been awarded with FSC™ Chain of Custody Certification.



# Formica Ligna®

NATURAL WOOD SURFACING *by* FORMICA GROUP

## Taiwan

Formica Taiwan Corporation  
Taiwan – Taipei  
6F., No. 68-70, Section 3, Nanking East Road,  
Zhongshan District, Taipei City 104, Taiwan  
Tel / (886-2) 2515-1017 Fax / (886-2) 2517-0542

Taiwan – Taichung  
8F.-8, No.290, Section2, Nantun Road,  
Nantun District, Taichung City 408, Taiwan  
Tel / (886-4) 2472-6276 Fax / (886-4) 2475-1360

Taiwan – Kaohsiung  
15F.-2, No. 110, Sanduo 4th Road,  
Lingya District, Kaohsiung City 802, Taiwan  
Tel / (886-7) 330-2365 Fax / (886-7) 330-2175

## China

Formica (China) Trading Co., Ltd  
China – Shanghai  
Rm. 1701, International Corporate City  
No. 3000, North Zhongshan Road,  
Putuo District, Shanghai 200063, China  
Tel / (86-21) 2211-3668 Fax / (86-21) 3252-2818

China – Beijing  
Rm. 327, Grand Pacific Building A, No. 8  
Guanghua Road, Chaoyang District,  
Beijing 100026, China  
Tel / (86-10) 6581-7717 Fax / (86-10) 6581-6733

China – Guangzhou  
Rm. 1209, Jie Tai Plaza, No. 218-222  
Zhongshan 6 Road, Yuexiu District,  
Guangzhou 510180, China  
Tel / (86-20) 8132-0258 Fax / (86-20) 8132-0033

China – Dongguan  
Rm. 1109, 11/F, B&Q Center Block A, Hongfu Road,  
Nan Cheng District, Dongguan 523073, China  
Tel / (86-769) 2270-2216 Fax / (86-769) 2278-1770

China – Shenzhen  
Rm. 803, Excellence Building, No. 98 Fuhua 1 Road  
Futian District, Shenzhen 518033, China  
Tel / (86-755) 8287-4880 Fax / (86-755) 8287-4881

China – Chengdu  
Rm. 1412, Huamin Empire Plaza, No.1 Fuxing Street,  
Jinjiang District, Chengdu 610016, China  
Tel / (86-28) 8670-3160 Fax / (86-28) 8670-3180

## Hong Kong

Formica (Asia) Limited  
Room 1305-9, 13/F., Olympia Plaza,  
255 King's Road, North Point, Hong Kong  
Tel / (852) 2598-0117 Fax / (852) 2598-6577

## Korea

Formica Korea Corporation  
6F SS Winners Bldg, 890-31 DaeChi-Dong,  
KangNam-Ku, Seoul, 135-839, Korea  
Tel / (82-2) 563-8755 Fax / (82-2) 563-8751

## Thailand

Formica (Thailand) Co. Ltd.  
51/27 Moo 2 Poochaosamingprai Road, Bangyaparak,  
Phrapradaeng, Samutprakam, 10130 Thailand  
Tel / (66-2) 755-8525 Fax / (66-2) 384-7537

Thailand Sales Office  
216/63 L.P.N. Tower, 15th Floor Nanglinchee Road,  
Chongnonsee, Yannawa, Bangkok 10120 Thailand  
Tel / (66-2) 285-2900 / (66-2) 285-4470  
Fax / (66-2) 285-2899

## Singapore

Formica (Singapore) Pte. Ltd.  
No. 502/502A, Sims Avenue Singapore 387567  
Tel / (65) 6514-1313 Fax / (65) 6846-7030

## Malaysia

Formica (Malaysia) Sdn. Bhd.  
B-10-3A, Level 10, Menara Bata, PJ Trade Centre,  
No. 8, Jalan PJU 8/8A, Bandar Damansara Perdana  
47820 Petaling Jaya, Selangor D.E, Malaysia  
Tel / (60-3) 7710-0512 Fax / (60-3) 7727-0510

## Indonesia

Sales Representative Office  
Mayapada Tower 2, 6th Floor, Suite 04  
Jl. Jend Sudirman Kav.27, Jakarta 12920, Indonesia  
Tel / (62-21) 2500-771 Fax / (62-21) 2500-772

## Philippines

Sales Representative Office  
Unit 800-C 20th. Drive Corporate Center, 20th.  
Drive, Bonifacio Global City, Taguig, Philippines  
Tel / (632) 553-9996 Fax / (632) 856-0407

## Vietnam

Sales Representative Office  
Level 3, 414 Nguyen Thi Minh Khai Street,  
District 3, Ho Chi Minh City, Vietnam  
Tel / (84-8) 5404-2308 Fax / (84-8) 5404-2309



# Formica Ligna®

NATURAL WOOD SURFACING *by* FORMICA GROUP

Heart Touching Craft.